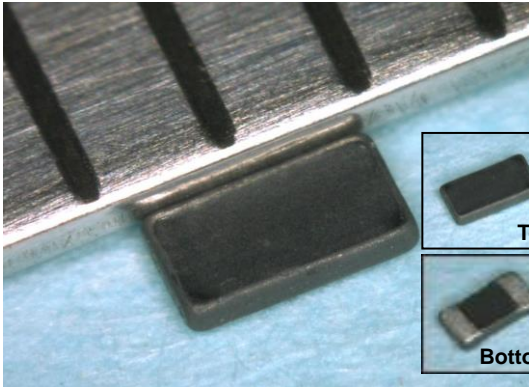


Multi-layer Power Inductor : MIPSEZ1608G series (LGA Type)



MIPSEZ1608G series (LGA type)
(1.6 x 0.8 x 0.55mm max)

Features

- 1.6x0.8 mm and 0.55mm in height (very compact size): CAE and fine printing technology made this compact size possible
- Stable minimum DC resistance in the class
- High speed mounting: Using SMT mounter makes less than a second mounting possible
- Excellent mounting strength by SMD chip making
- Reduced noise over 2/3 of coil inductor by optimal design of CAD
- Completely lead-free product and support lead-free solder

Applications

- DC-DC converters and power modules used for the following equipments. Compact electrical instruments such as cellular phones, DSC, DVC, PDA, DVD and HDD.

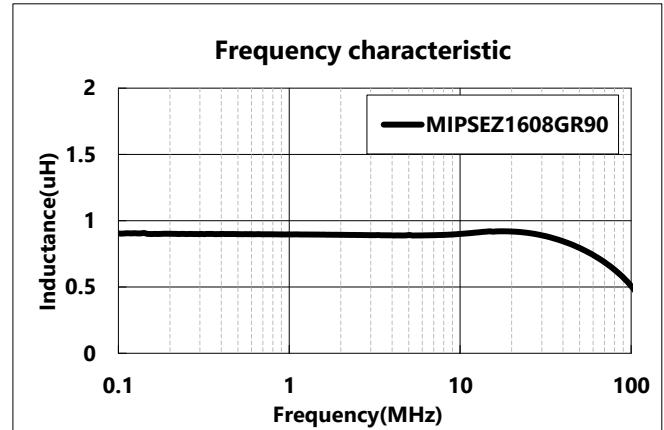
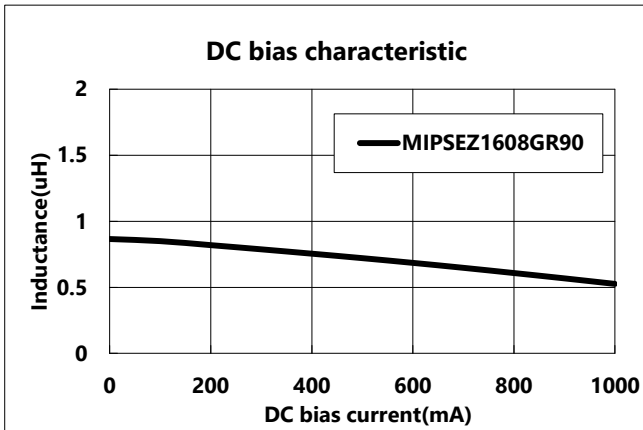
Specifications

| | |
|-------------------------------|--------------------|
| Product name | MIPSEZ1608G |
| | R90 |
| Inductance(μH) at 1MHz | 0.90±30% |
| DC resistance(ohm) | 0.22±30% |
| Rated current(A)*1 | 1.0 |
| Rated current(A)*2 | 0.6 |

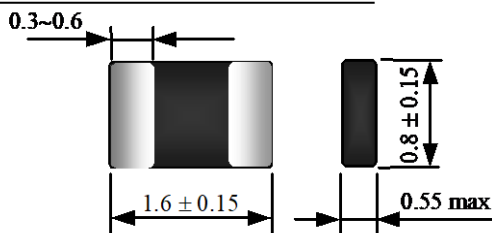
Rated current_1* : In case temperature rise to 40°C due to self-heating.

Operating temperature range: -40~85°C

Rated current_2* : The saturation current : L=-30% down from initial L value.

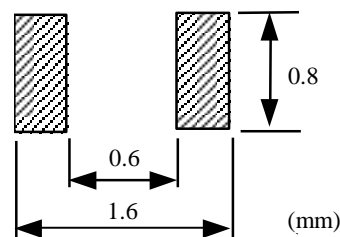


Shapes and Dimensions



Standard package : Emboss taping (reel)

Recommended land pattern



■ The description in this catalogue is subject to change without notice. As of Jul, 2019